

# Denali, Tahoe & Yukon Lowering Instructions

**Make sure the key is out of the ignition and no power is on. Spray a little WD40 or similar lubricant on the factory Link ends before removal.**

## **Front:**

1. Jack up each corner and locate the stock ride height sensor Links. They're straight inside the wheel well right above the tire.
2. To remove the factory Link pop it off the control arm side first. Then you must push out the little pin on the sensor side. Once out, slide the Link off the ball stud.
3. Lengthening the Link from the factory length will lower the vehicle. Each 5mm longer than stock will lower approx.  $\frac{3}{4}$  - 1 inch. Set the new Adjustable Links so they are equal in length.
4. Install Adjustable Links with long end up. Black end to the sensor.

## **Rear:**

1. Jack up the rear and locate the stock ride height sensor Links. They are connected to the lower control arms.
2. Remove it the same way as front, Control Arm side first and be sure to Remove the pin.
3. Shortening the Link from the factory length will lower the vehicle. Each 5mm shorter than stock will lower approx.  $\frac{3}{4}$  - 1 inch. Set the new Adjustable Links to equal lengths.
4. Install with a long end up. Black end to sensor. Start the vehicle, raise it up and down and move it forward and back to get the suspension active to the new settings. If you are not happy with the height you can easily re-adjust each Link. Just remove 1 side and give it a few turns. Usually, 3 turns is about a  $\frac{1}{4}$  inch in height.

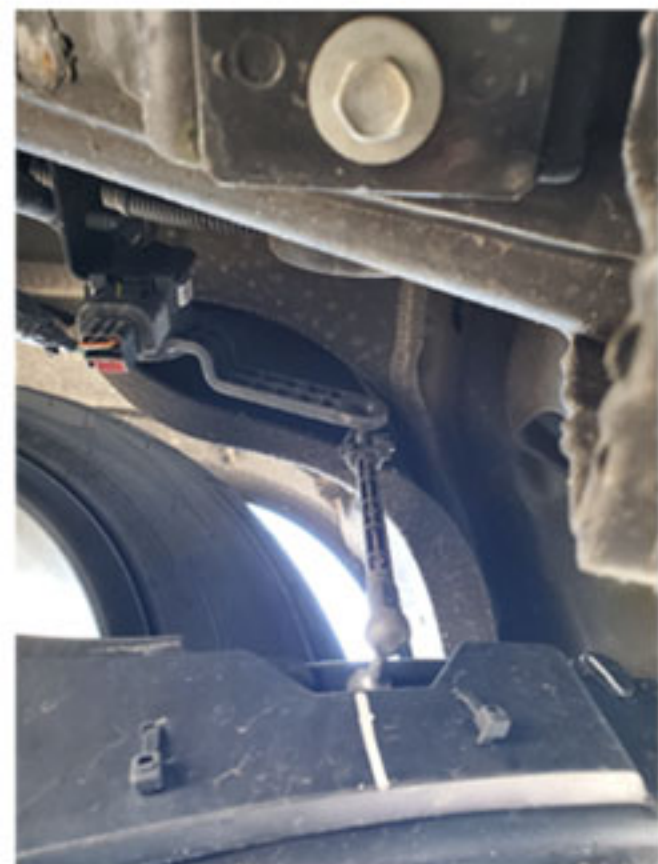
**Depending how low you make the vehicle a wheel alignment may be required to reduce tire wear.**



Stock Link



Adjustable Link



Stock Link



Adjustable Link